



# COMPANY BROCHURE

Building a best brand in IoT

SMART HOME

SMART LOCK

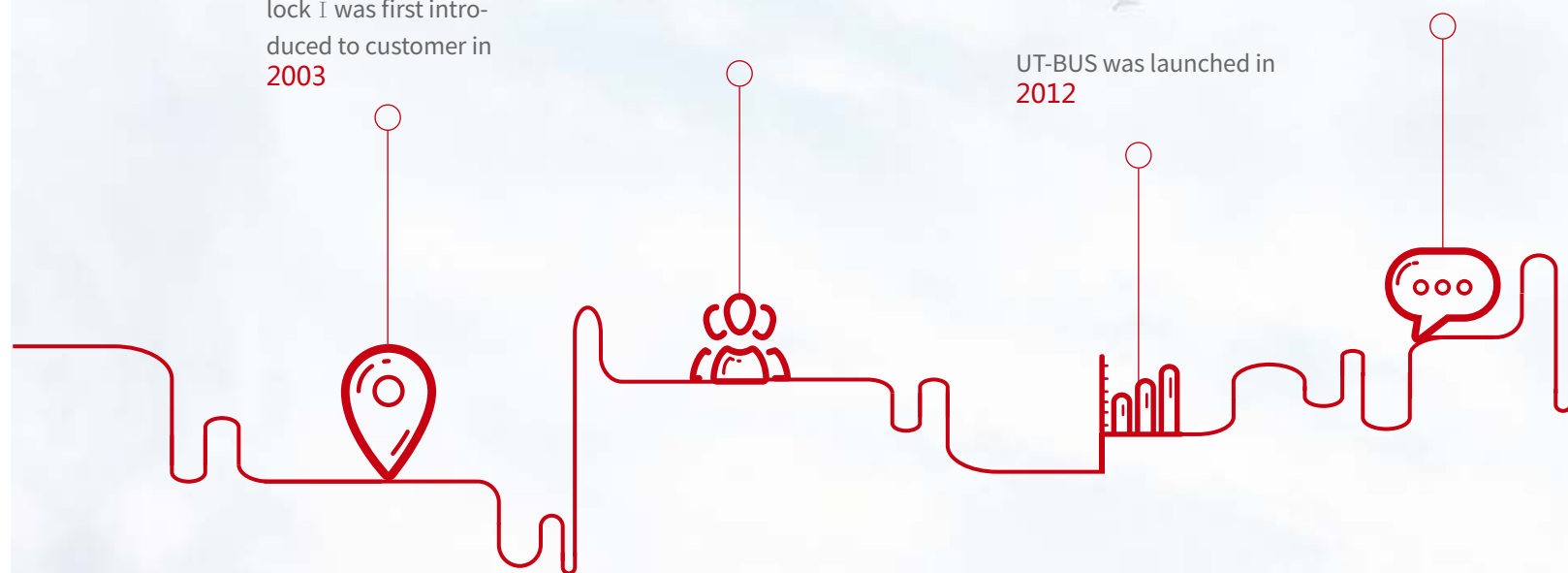
# HISTORY OF UNILINK

UNILINK's intelligent lock I was first introduced to customer in **2003**

From **2003** to **2010**, UNILINK lock II has become one of the best choice of many of the power industry company.

UT-BUS was launched in **2012**

"UT smart home" has been published on the App store in **2013**

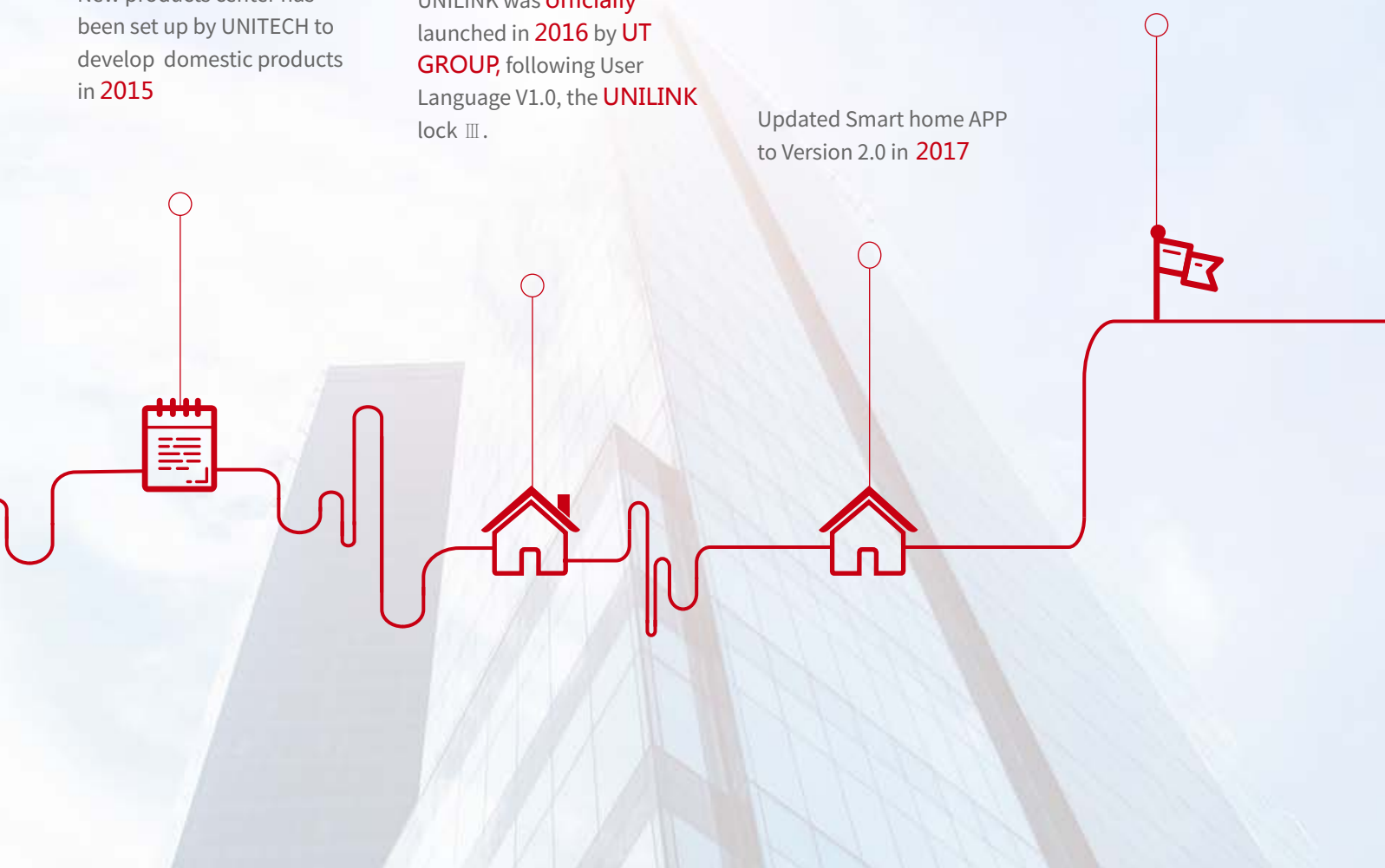


New products center has been set up by UNITECH to develop domestic products in **2015**

UNILINK was **officially** launched in **2016** by **UT GROUP**, following User Language V1.0, the **UNILINK** lock III.

Updated Smart home APP to Version 2.0 in **2017**

"UT smart lock" application was published in **2018**





## ABOUT US

UNILINK, a subsidiary of the China conglomerate corporation UT GROUP, is headquartered in Zhuhai. It is a technology company that specializes in IoT products and services, which includes smart home systems, smart lock systems, parking systems and building automation systems.

UT GROUP focuses on automatic generation control in electric power system and provides its automation solutions, development, sales, engineering service for more than 30 years, serving customers in over 10 countries.

After its rapid growth, UT GROUP began to restructure the business to fit UT GROUP's IoT strategy. In 2016, UT GROUP founded a subsidiary called UNILINK.

We have professional teams (product development, sales, customer service) supply the new technology, high quality products and the best service. And, at the same time, we corporate a successful relationship with Sun Yat-sen University.





## Core mission

Create unique pursuit perfect

## Core goals

Building a best brand in IoT

## Core value

Integrity, Passion, Collaboration, Innovative, Customer Service

# CATEGORIES

---

## SMART HOME

---

05 ▶ INTRODUCTION

---

11 ▶ SCENARIO

---

13 ▶ SOLUTIONS

---

17 ▶ CONTENTS

---

## SMART LOCK

---

27 ▶ SYSTEM & SOLUTIONS

---

33 ▶ INTRODUCTION

---

# SMART HOME

---

## overview

UNILINK adds remote&local control and automation to lighting, appliance and home control applications of all types, allowing you to manage your home the way you want. Combined UT-BUS and ULP technology to install and setup.UNILINK offers the flexibility and dependability to make your life more convenient, safe and fun.





## The way we understand smart home



Secure



Comfortable



Convenient



Energy saving



Customization

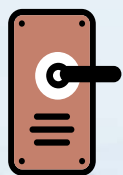


Scenario

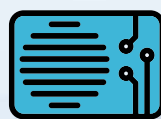
# SUBSYSTEM



Smart lighting system



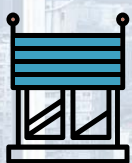
Smart locks



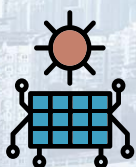
Air conditioner control



Smart home security system



Smart curtains



Energy saving



Wireless coverage



Mobile device control



# CORE FUNCTIONS

## Scenario Control

You can customize multiple scenarios (standard, reading, entertainment), control the indoor equipment quickly.

## Remote Monitoring

Indoor smart devices are able to be monitored remotely and checked via mobile APP.

## Customized Buttons

You can change and customize every button's functions according to your habits.

## Timing Control

Hotel morning call can be replaced by rich timing control function, which reduces the number of workers.

## Coupling Control

All indoor equipment can realize linkage control, which simplifies the operation and makes customers more comfortable.

## Security Monitoring

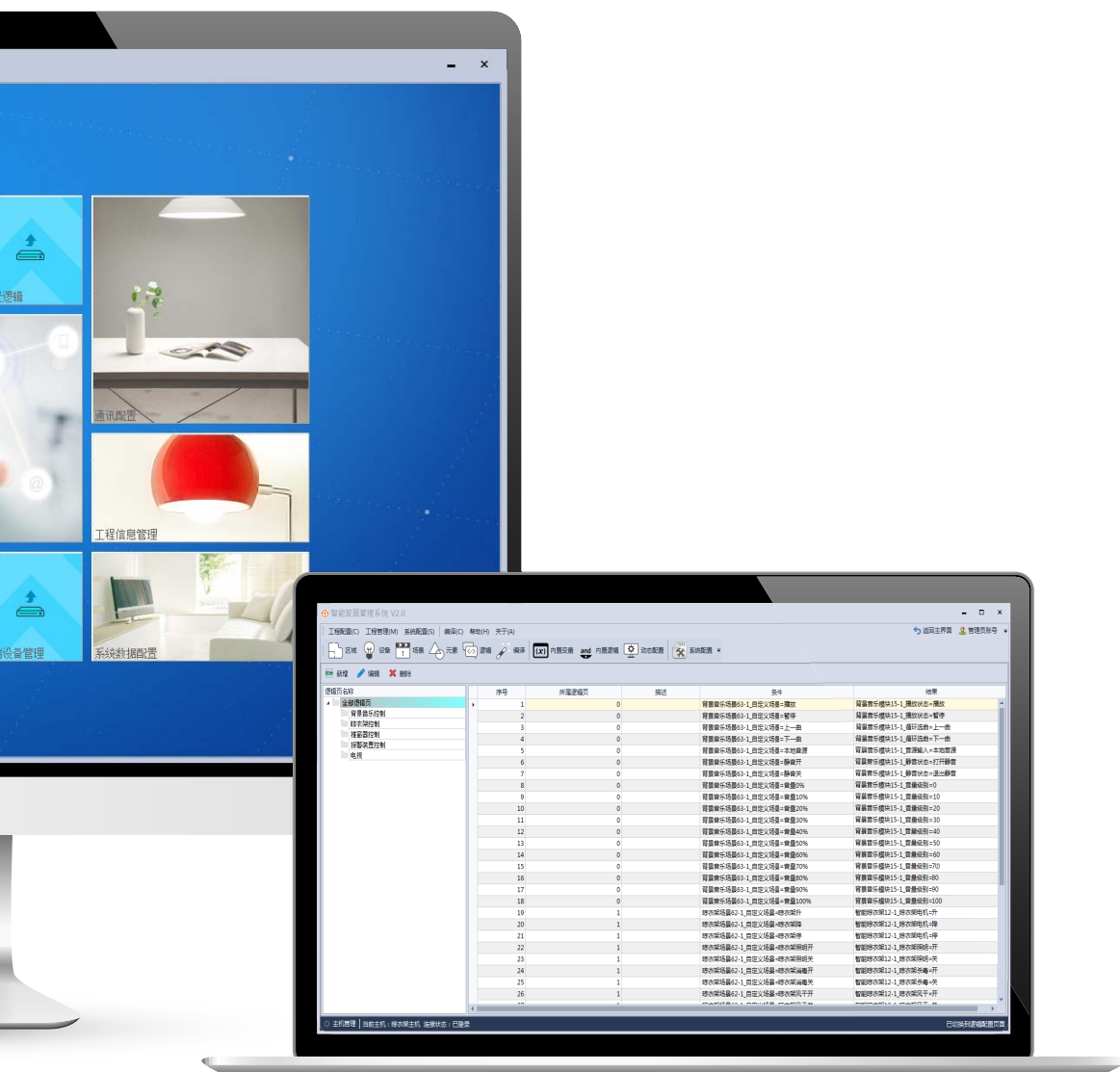
With the indoor alert function, customers can be reminded in time when indoor break-in happens.

- Area setting
- Device setting
- Scenarios setting
- Language setting
- Compiler & download



APP





Desktop APP

# SCENARIO

---



## Good morning

Your smart home springs into action the moment you get up  
“Good morning” scenario ensures the perfect start to a relaxed day

The light and AC go on



## Leaving home

When leaving home you want to ensure that your lights, appliances and heating are off and the alarm is set. All you need to do is tap a button.



## Guest access

Grant unlimited digital keys valid for a few weeks, a few hours, or a few minutes. Never worry about lost, stolen or copied keys again.







## Coming home

Arrive home with a heated or cool home selected lamps and appliances and set the room to reflect your mood.



## Good night

Go straight to bed

The heating is turned down

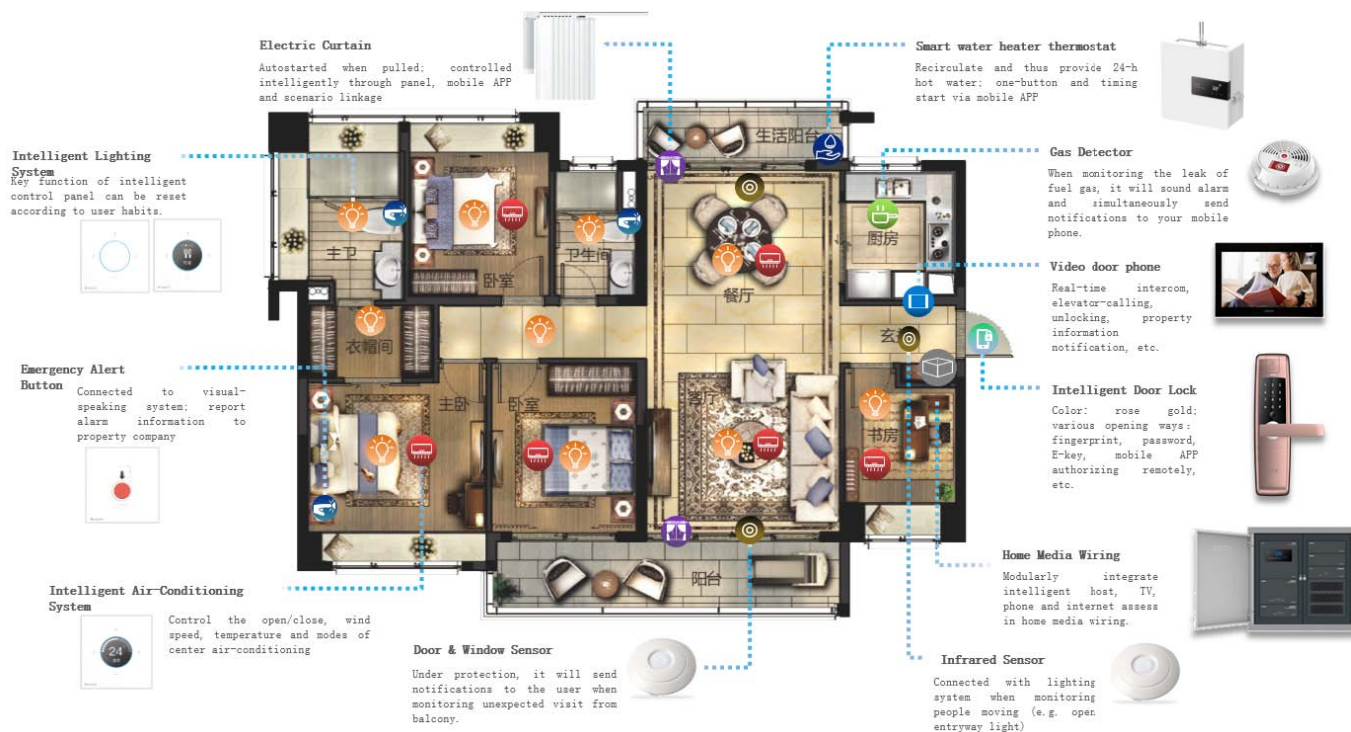
The lights are switched off and  
your curtain is closed.

The alarm is set.

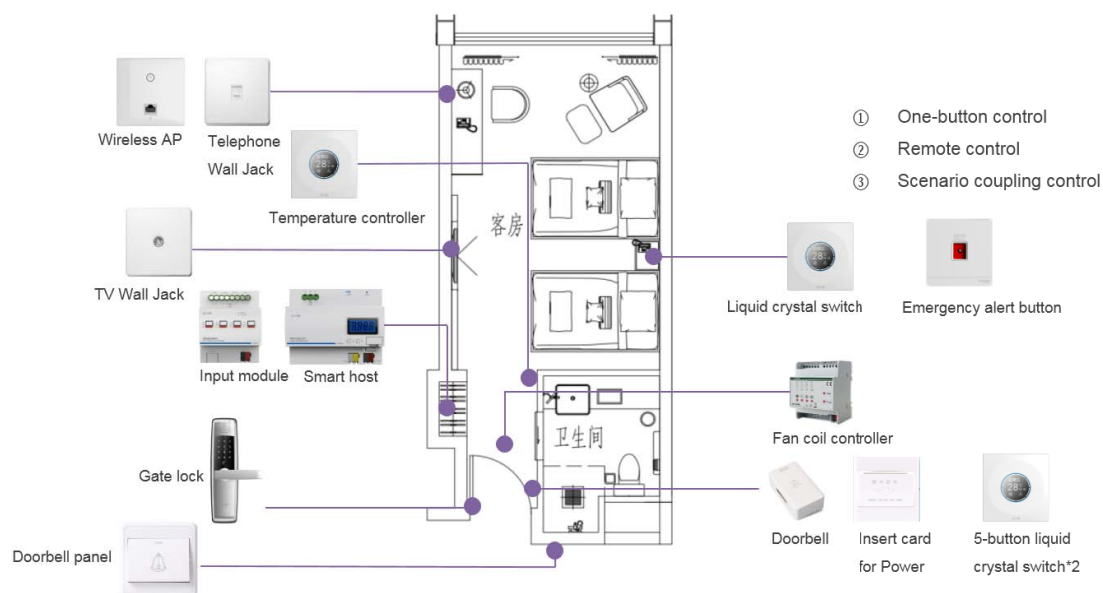


# SOLUTIONS

## Smart Apartment (4 bedrooms & 2 living rooms & 2 bathrooms)



## Smart Hotel



Hotel Guest Room Control System

## Smart single family



### Intelligent Door Lock System

Fingerprint, password, card, unconsciously, authorizing remotely, etc.



### Home Media Wiring

Modularly integrate intelligent host, TV, phone and internet access



### Gas Detector

When monitoring the leak of fuel gas, it will sound alarm and simultaneously send notifications to your mobile phone.



### Intelligent Air-Conditioning System

Control the open/close, wind speed, temperature and modes of center air-conditioning



### Smart water heater thermostat

Recirculate and thus provide 24-h hot water; one-button and timing start via mobile APP



### Intelligent Lighting System

Indoor lighting can be matched and controlled at will. (Living room, dining room, bedroom, bathroom, kitchen entrance and bedside)



### Emergency Alert Button

Connected to visual-speaking system; report alarm information to property company



### Control of Exhaust Fan

Controlled by smart switch panel, mobile APP; Equipped in the doorway of main and second bathroom



### Door & Window Sensor

Send notifications to the user when monitoring unexpected visit from balcony.



### Electric Curtain

Controlled intelligently through panel, mobile APP and scenario linkage



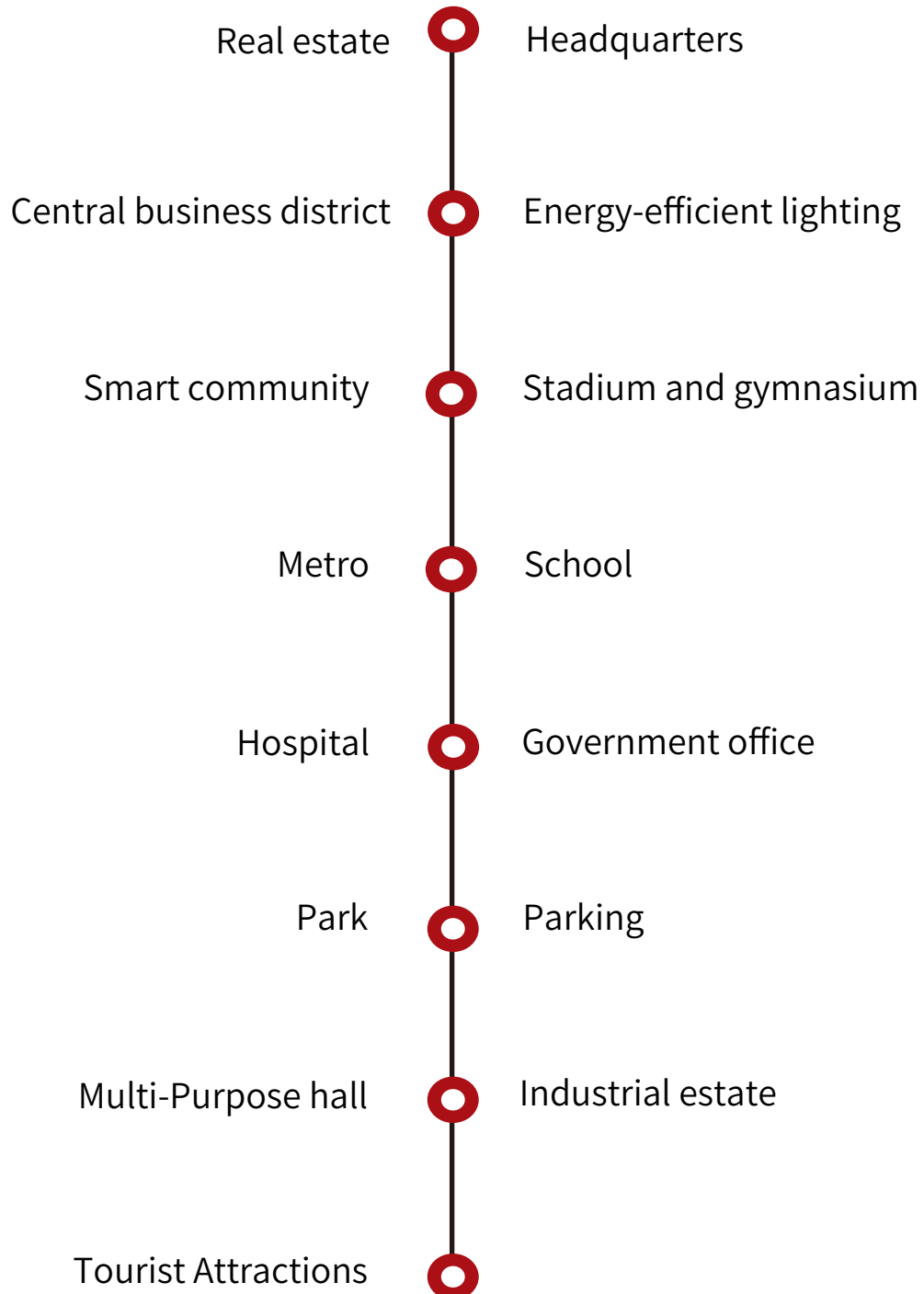
### Video door phone

Unlocking and visual intercommunication between visitors and hosts



# USECASE

---

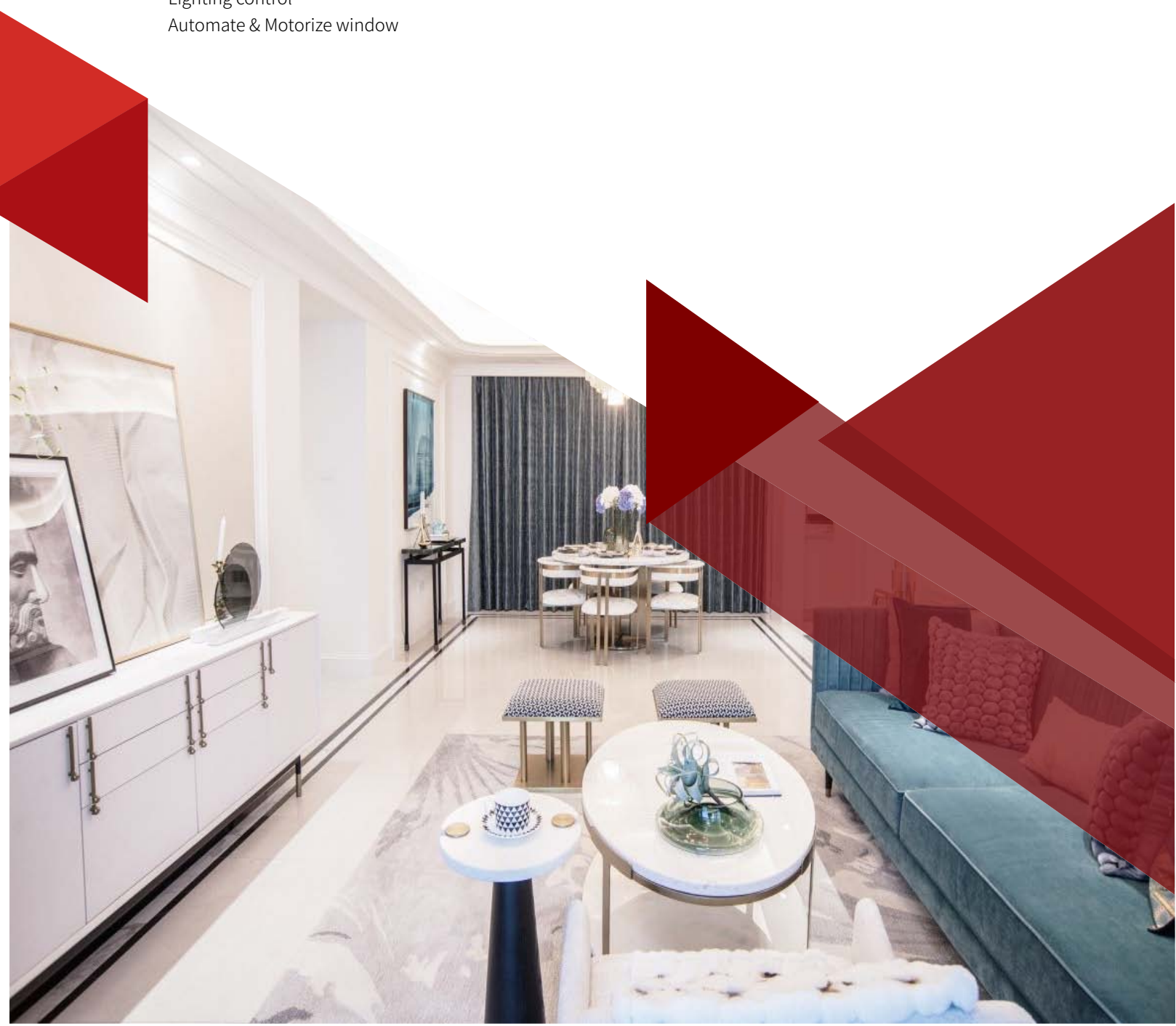


# CASE STUDY

---

## Living Inside a Smart Home: GREENTOWN-UT case study

Smart locks  
Home security  
Smart water heaters  
Lighting control  
Automate & Motorize window



# OVERVIEW

---

## UT smart home hub

The UT smart home hub is the brains of the operation. It creates wire network to connect and communication with all your smart devices.

### Highlights

- ▶ Input / output 64 nodes
- ▶ Maximum transmission distance 1000M
- ▶ UT user language programming
- ▶ Internet access, UT-BUS power line is a protocol for communication, signaling and control among devices for used
- ▶ for home automation
- ▶ Single point, multi point, area, scheme, timer automation
- ▶ Network topology: star, tree, line
- ▶ Local control and remote control
- ▶ Save data on power failure
- ▶ 30V Backup battery

### Tech specs

- ▶ Working voltage: AC 100V~240V, 50/60HZ
- ▶ Operating temperature: -10 ~ +55 C
- ▶ Relative humidity: less than 95%RH
- ▶ Communication: UT-BUS, RS485, 100M Ethernet
- ▶ Dimensions: 155mm(L)X 138mm(W)X 36mm(H)





## Home media wiring

Keep your connected home running efficiently with a structured home media wiring system to manage and distribute a wide range of data networking, voice, audio, and video wiring from one central location.

### Highlights

- ▶ Modular installation, great extendability and upgradability
- ▶ Structured wiring, integrated management. Avoid disorder wiring
- ▶ Ultra low-power, long life
- ▶ Easy to install, operate, maintain

### Tech specs

- ▶ Operating temperature: -10 ~ +55 C
- ▶ Relative humidity: less than 95%RH
- ▶ Installation: Hang to wall
- ▶ Dimensions: 420mm(L) × 362mm(W) × 120mm(D)



## Smart home wireless hub

It'll create a wireless network to connect and communicate with all your smart home devices

### Highlights

- ▶ RF 433MHz Transmitter/Receiver
- ▶ Wireless Wi-Fi module (SmartLink)
- ▶ Colorful nightlight and 16 million colors
- ▶ Acousto-optic alarm
- ▶ Sounds warning

### Tech specs

- ▶ Working voltage: AC110 to 240V, 50/60HZ
- ▶ Operating temperature: -10 ~ +55 C
- ▶ Relative humidity: less than 95%RH
- ▶ Communication: 433MHz, Wi-Fi
- ▶ Dimensions: 85mm(L) X 85mm(W) X 58mm(H)



## Smart water heater thermostat

ZDHS-1B is a smart water-heater controller. It is prevalent on single family, community, office/ commercial building, hotel, single house with UT-BUS system to set.

### Highlights

- ▶ In-house control
- ▶ Remote control
- ▶ Prevent turn on without water
- ▶ Anti-overuse
- ▶ Anti-freeze and prevent scale
- ▶ Non-volatile Memory
- ▶ All weather automatic hot water supply
- ▶ Hot water 24/7
- ▶ Automatically to run at your scheduled time
- ▶ Convenient control from a smart phone – monitor and change settings from anywhere

### Tech specs

- ▶ Working voltage: AC 220V, 50/60HZ
- ▶ Operating temperature: -10 C to +55 C
- ▶ Relative humidity: less than 95%RH
- ▶ Input water pressure: 50Pa to 500Pa
- ▶ Communication: UT-BUS, 433M
- ▶ Installation: wall-mounted





## Smart door lock

### Highlights

- ▶ Co-use gateway, Phones remote control, data-sending when opening/shutting doors
- ▶ Support fingerprint, password, card, key, mobile Bluetooth and other unlocking methods
- ▶ ID Electro-Mechanical key, dual insurance
- ▶ Record unlocking information
- ▶ Support A/B card operation
- ▶ Lift to lock, voice prompt of lifting
- ▶ Smart voice guidance, simple and lucid to operate
- ▶ Lock-picking, breaking warning; low power remind and various warning function



### Tech specs

- ▶ Working voltage: DC6V
- ▶ Operating temperature: -10 C ~+55 C
- ▶ Average maximum working current: less than 150mA
- ▶ Average quiescent current: less than 25uA
- ▶ Battery life: greater than 5000 times (unlocking time)
- ▶ Low battery life : greater than 50 times (unlocking time)
- ▶ Dimensions: 340mm (L) × 167mm (W) × 89mm (H)



Fingerprint House  
Trigger button

Password and card

Doorbell (Button)

Emergency power supply  
Reboot button  
Key hole



Battery compartment

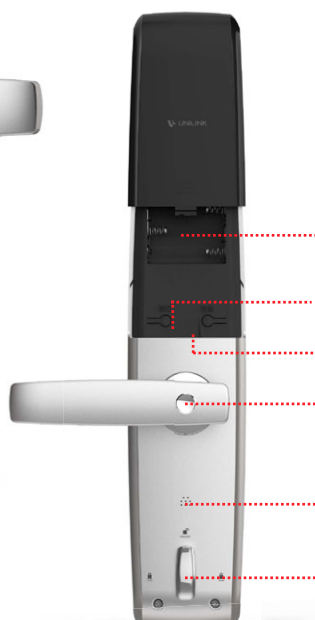
System setting button

Volume adjustment button

Peephole-avoiding button

Bell mouth

Security knob

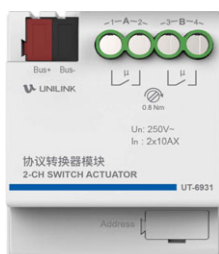


## Protocol Converter

Provides converters for data communication and conversion between UT-BUS and RS-485

### Highlights

- ▶ Web-enabled; mobile monitors 'third-party devices remotely'
- ▶ Online upgrade
- ▶ Use descriptive language to logically programm



### Tech specs

- ▶ Working voltage: DC 24V to 30V
- ▶ Working current:  $\leq 3\text{mA}$
- ▶ Operating temperature:  $-10$  to  $+55^{\circ}\text{C}$
- ▶ Relative humidity: less than 95%RH
- ▶ Communication: UT-BUS
- ▶ Dimensions: 60mm(L)x 50mm(W) x28mm(H)
- ▶ Installation: DIN35mm rail



## Flex Switch

Simply assign configurable scenarios or function to one or more buttons on the switch. Your smart home then stats the stored routine and makes you even more flexible when it comes to controlling your home.



### Highlights

- ▶ Tablet input panel with touchscreen
- ▶ 3-way relay output
- ▶ UT-BUS, communication, signaling
- ▶ 433M communication
- ▶ Breathing lamp
- ▶ Slider design, combined smart and traditional switch
- ▶ Liquid crystal display

### Tech specs

- ▶ Working voltage: DC 24V to 30V
- ▶ Operating temperature: -10 to +55°C
- ▶ Relative humidity: less than 95%RH
- ▶ Communication: UT-BUS
- ▶ Output: 3-way relay output, less than 16A per each
- ▶ Dimensions: 90mm(L)x 86mm(W) x37mm(H)
- ▶ Installation: 86-type switch socket case

## Third party products



### Intelligent curtain control

Including intelligent curtain and illumination sensor automatically controls the curtain opening and closing to maintain the brightness and shade of the home. You can control it locally and remotely with the multifunctional gateway. And, Compatible with most standard brand.



### Smoke detector

The smoke alarm looks for both fast and slow burning fires. It can added to you home system more safety and peace of mind by sending you a remote notification when something goes wrong facilitating a fast call when you' re away from home/office.



### Infrared sensor

It detects motion and movement in an area real-time. These sensors can be connected to lighting or the thermostat to help control the energy usage in a room based on the occupancy of the room. Home hub and system allows you access to all of the smart home sensors.



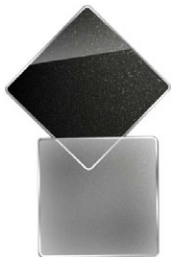
## Smart window

Motorizes your sliding windows and allows them to open and close automatically based on your preferences and needs.



## Electric clothes hanger

With home automation system and smart switches give you remote control( schedules, sensors, scenarios)



## LC film

With home automation system and smart switches give you remote control( schedules, sensors, scenarios)



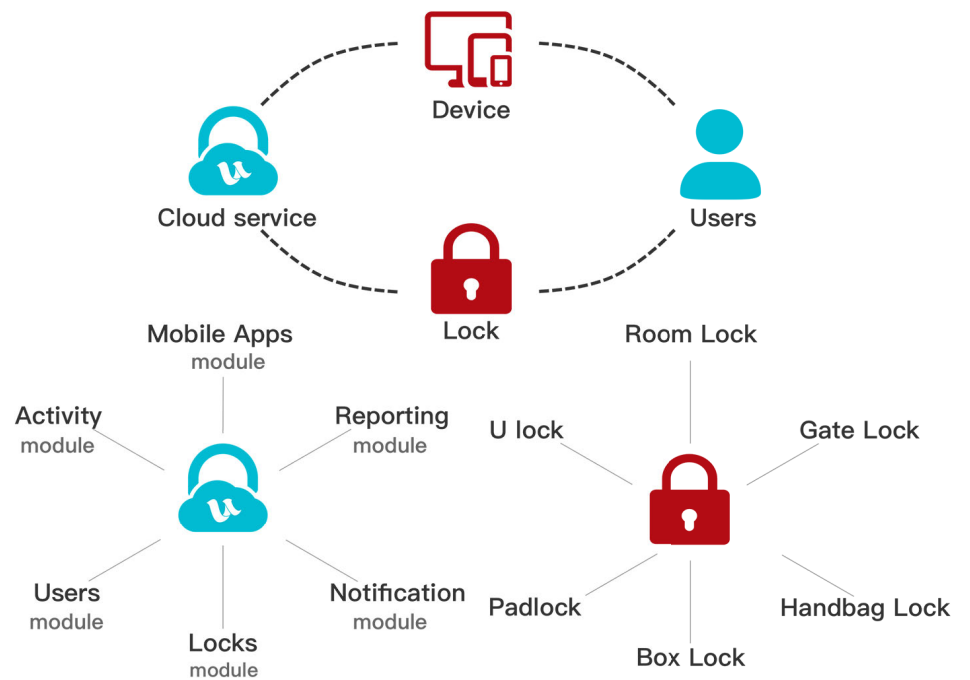
## Air conditioner control

With home automation system and smart switches give you remote control( schedules, sensors, scenarios)



# SMART LOCK

---



Structure

Our enterprise solutions combine the power of smart lock hardware and enterprise cloud software, enabling a robust and scalable solution to improve access control efficiency for organisations.

## Highlights

### Authority management

Multi-role. Administrator can authorize and manage users remotely, as well as set timeliness of authority. Group management of selected locks. Authority can be transferred.

### Status updates

Checking the status of your lock and telling you if your lock is securely locked, including conditions, operators, operating time, authority level, fault information, etc.

### Cloud software

Open platform, which Supports SDKs that allow developers to create systems and applications. “Big data analysis” and “Block chain” empower businesses & organisations to securely manage their smart devices and track activity.

### Auto-Unlock

Auto-Unlock relies on Bluetooth and knows when you arrive and unlocks the door as you approach.

## COTS(Commercial Off-The-Shelf) product

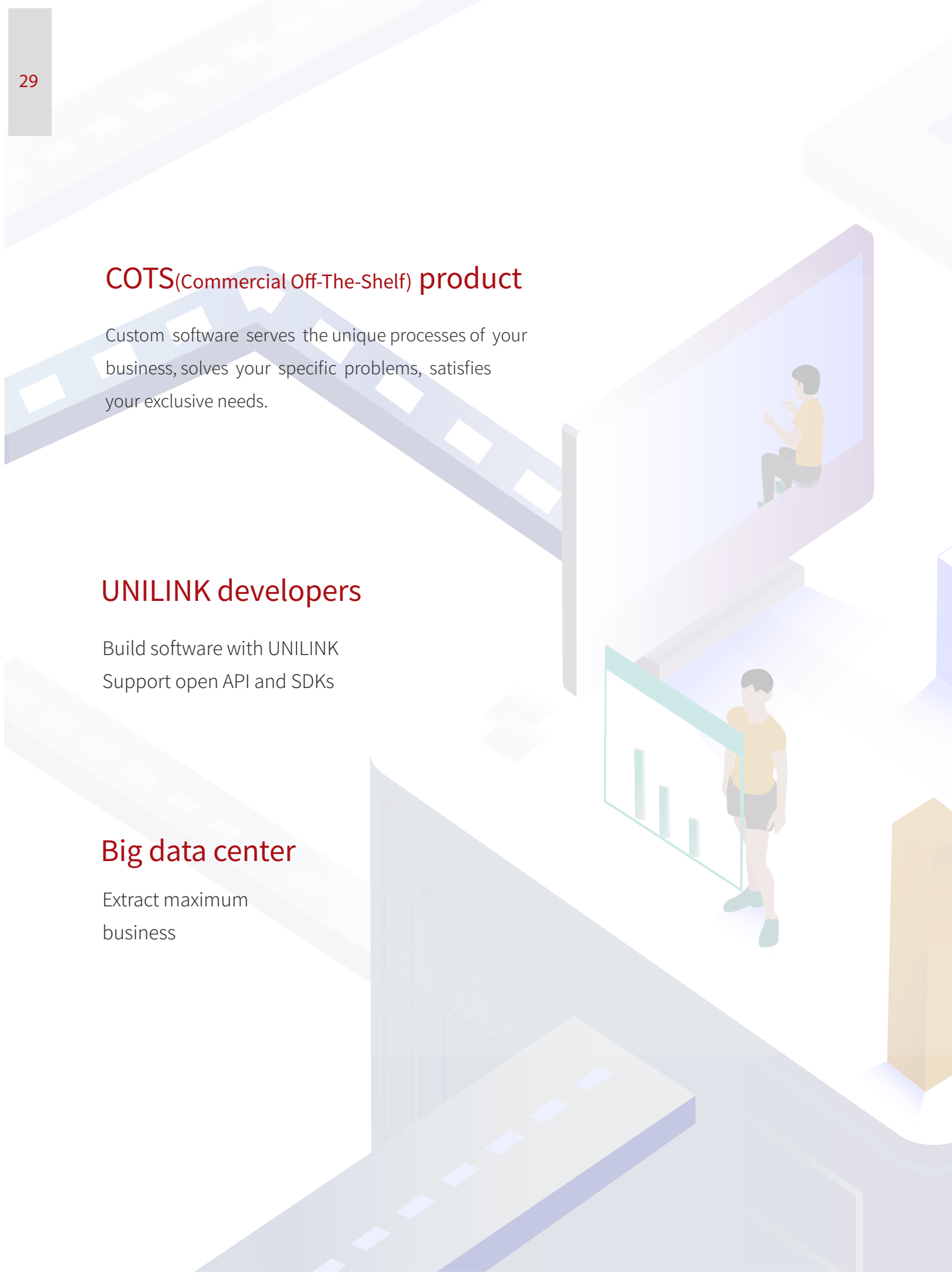
Custom software serves the unique processes of your business, solves your specific problems, satisfies your exclusive needs.

## UNILINK developers

Build software with UNILINK  
Support open API and SDKs

## Big data center

Extract maximum  
business



## Statistical support services

Statistical analysis  
Data visualization  
Statistical consulting

## Big data consulting services

Monetize traffic  
A bootstrapped guide to validating your customer personas  
Industry analysis

## Featured App

Smart lock application  
Web portal(Admin uses to manage locks)



## USECASE

Property   Power station   Factory  
School   Warehouse   Apartment  
Home   Hospital   Shop

# SCENARIO

---

## Outdoor cabinet

Authorized users can unlock by mobile phone, do not need to bring keys, which makes it convenient for operators.

Operational records are available; management is standardized and supported.

## Transport cabinet

The track of transport is recorded in real time; Unpacking records are available.

## Box/handbag

Multiple encryption, safe and reliable

Location information can be seen

## Room door

Can preset to be locked or not after closing

Locked based on demand, guarantee user's privacy

## Gate door

Authorize secretly

Get information of who opened the door and entrance guard

## Playing room door

Multi-user can be authorized

Multi-user can be authorized

Connect charging system, manage and control use time

## Bicycle lock

Without key hole, anti-damaged  
Super-C lock, safe and reliable

## Cabinet

Unlock remotely through authorization

Unlock through Bluetooth, more convenient

## Safety box

Multiple encryption, protect property safety

Automatic alarm when abnormally unlocked

# OVERVIEW

---

Upgrades your existing Kwikset, Weiser, Baldwin or Schlage deadbolt into a smart lock that you can lock/unlock within Bluetooth range using your smart device.

## Pin tumbler mechanism

### Highlights

- ▶ Spin tumbler /Extend tumbler
- ▶ Low-power, energy-saving
- ▶ LED indication when working
- ▶ Multiple Authentication software and hardware encrypting, safe and reliable
- ▶ Operational records
- ▶ Bluetooth auto-unlock as you set,low-power
- ▶ Cloud service and big data analysis

---

## Tech specs

- ▶ Working voltage: DC3V  $\pm$ 10%
- ▶ Quiescent current: less than 1uA
- ▶ Average action current: less than 85mA
- ▶ Wake-up connection time: less than 200ms
- ▶ Lock-out time: less than 80ms
- ▶ Maximum load (Balls): 6g
- ▶ Unlocking device: motor drives
- ▶ Lifetime: greater than 100,000 times
- ▶ Working temperature: -10 to +55°C
- ▶ Relative humidity: less than 95%RH



A pin tumbler mechanism

## Tech specs

- ▶ Working voltage: DC3V  $\pm$ 10%
- ▶ Quiescent current: less than 1uA
- ▶ Average action current: less than 85mA
- ▶ Wake-up connection time: less than 200ms
- ▶ Lock-out time: less than 80ms
- ▶ Maximum load (Balls): 3g
- ▶ Unlocking device: motor drives
- ▶ Lifetime: greater than 100,000 times
- ▶ Working temperature: -10 to +55°C
- ▶ Relative humidity: less than 95%RH



B pin tumbler mechanism

---



---

## Padlock

### Highlights:

- ▶ Brass and stainless steel shackles and body for increased weather resistance
- ▶ Hardened steel for maximum resistance to cutting
- ▶ Low-power, energy-saving
- ▶ Bluetooth unlock, efficient and convenient
- ▶ LED indication when working
- ▶ Multiple Authentication software and hardware encrypting, safe and reliable
- ▶ Operational records

### Tech specs

- ▶ Working voltage: DC3V  $\pm$ 10%
- ▶ Quiescent current: 3uA
- ▶ Average action current: 85mA
- ▶ Wake-up connection time: less than 200ms
- ▶ Lock-out action time: less than 80ms
- ▶ Unlocking device: motor drives
- ▶ Lifetime: greater than 100,000 times
- ▶ Working temperature: -10 to +55°C
- ▶ Relative humidity: < 95%RH
- ▶ Product size: 53.5 mm (L)  $\times$  49 mm (W)  $\times$  19.5 mm (H)
- ▶ Waterproof grade: IP65
- ▶ Battery life: greater than 1.5 year (10 times a day, recommending using genuine Energizer or Panasonic battery)



---

## Handbag or box lock

### Highlights

- ▶ Touch to unlock, APP control
- ▶ LED indication when working
- ▶ Zinc alloy shell
- ▶ Easy installation, compatibility
- ▶ Home-made pin tumbler mechanism
- ▶ Timing lock, wrong operation prevention
- ▶ Low-power, energy-saving

### Tech specs

- ▶ Working voltage: DC3V  $\pm$  10%
- ▶ Quiescent current: 3uA
- ▶ Average action current: 125mA
- ▶ Wake-up connection time: less than 200ms
- ▶ Lock-out time: less than 80ms
- ▶ Unlocking device: motor drives
- ▶ Lifetime: greater than 100,000 times
- ▶ Working temperature: -10 to +55°C
- ▶ Relative humidity: less than 95%RH
- ▶ Product size: 91 mm (L)  $\times$  39 mm (W)  $\times$  15 mm (H)
- ▶ Waterproof grade: IP67
- ▶ Battery life: greater than 1.5 year (10 times a day, recommending)



---

## Room door lock

### Highlights

- ▶ Touch to unlock, APP control
- ▶ LED indication when working
- ▶ Bluetooth unlocking and urgent mechanical unlocking
- ▶ Thickened stainless steel baffle and spring bolt, sturdy and reliable
- ▶ Individual lever handle to prevent unlocking violently
- ▶ Aluminum alloy panel
- ▶ High-quality lock cylinder
- ▶ Low-power

### Tech specs

- ▶ Working voltage: DC3V  $\pm 10\%$
- ▶ Quiescent current: 3uA
- ▶ Average action current: 125mA
- ▶ Wake-up connection time: less than 200ms
- ▶ Lock time: 500ms
- ▶ Unlocking device: motor drives
- ▶ Lifetime: greater than 100,000 times
- ▶ Working temperature: -10 to +55°C
- ▶ Relative humidity: < 95%RH
- ▶ Product size: 184 (length)  $\times$  48 (width)  $\times$  11 (height) mm
- ▶ Waterproof grade: IP50
- ▶ Battery life: greater than 1.5 year (10 times a day, recommending using genuine Duracell or Nanfu battery)



# PARTNERS







Scan QR code for more information

**ZHUHAI UNILINK TECHNOLOGY CO.,LTD**

Telephone : 400 930 0838

0756-2552518

Fax : 0756-2552552

Website : [www.zhunilink.com](http://www.zhunilink.com)

Address : Unitech Building, No.102 Yinhua Road,Xiangzhou District,Zhuhai,Guangdong,China